

Stopped Chamfer – iFeature Help

Designed By: Paul Munford

Version 01 - 05th September 2010

www.CadSetterOut.com

This Autodesk Inventor iFeature will create a stopped Chamfer on the Arris of a stock length of timber. This help file should help you to correctly place and size the Feature.

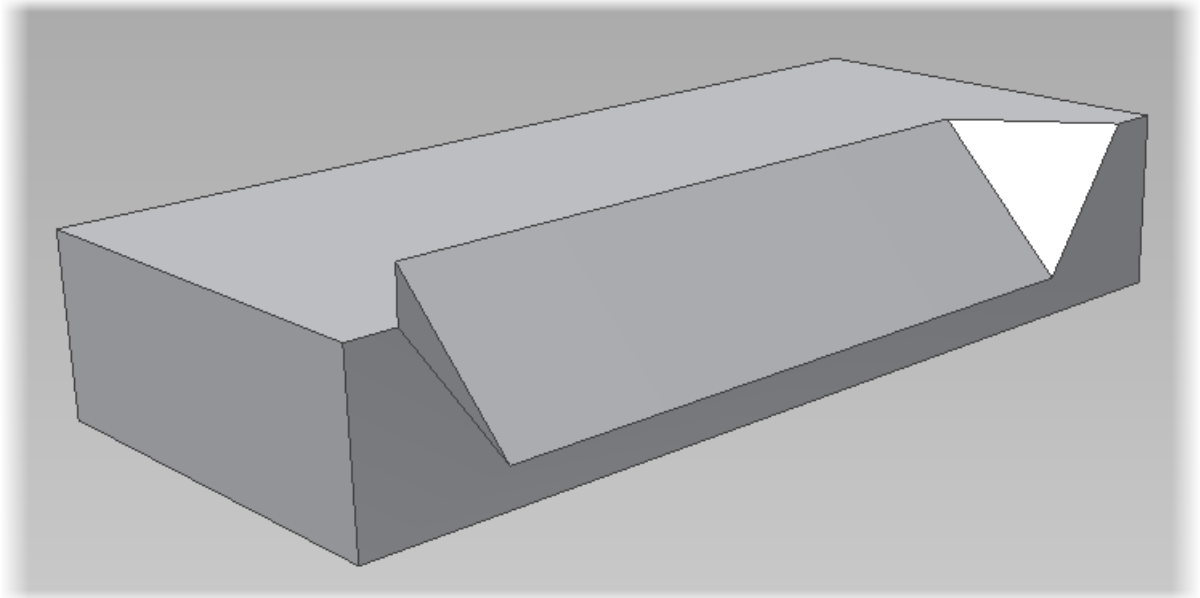


Figure 1 - The finish stopped chamfer

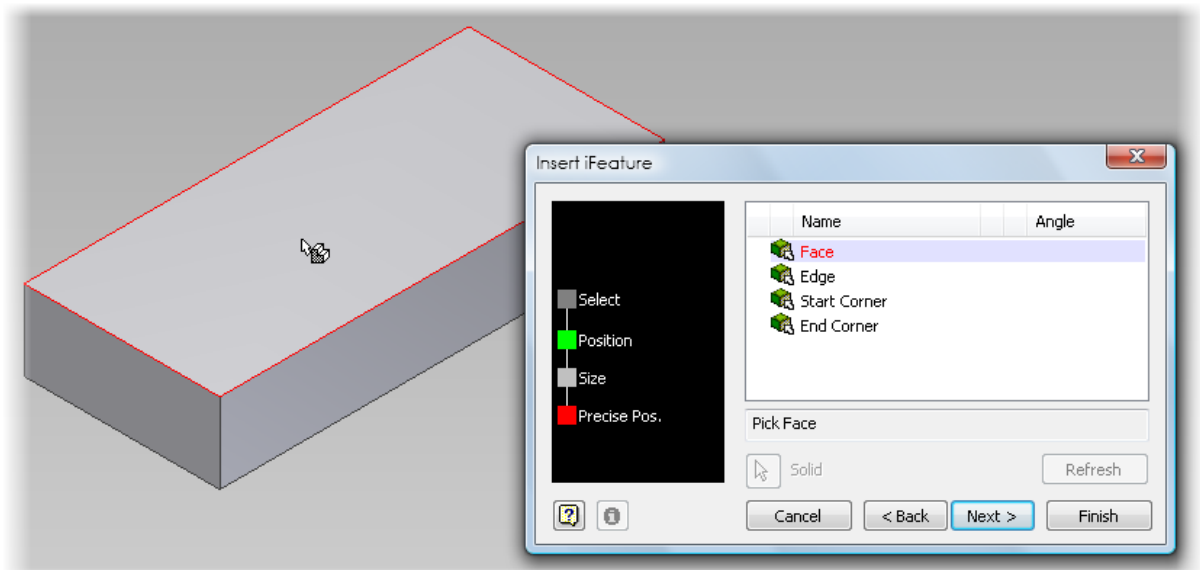


Figure 2 - Pick a Datum face

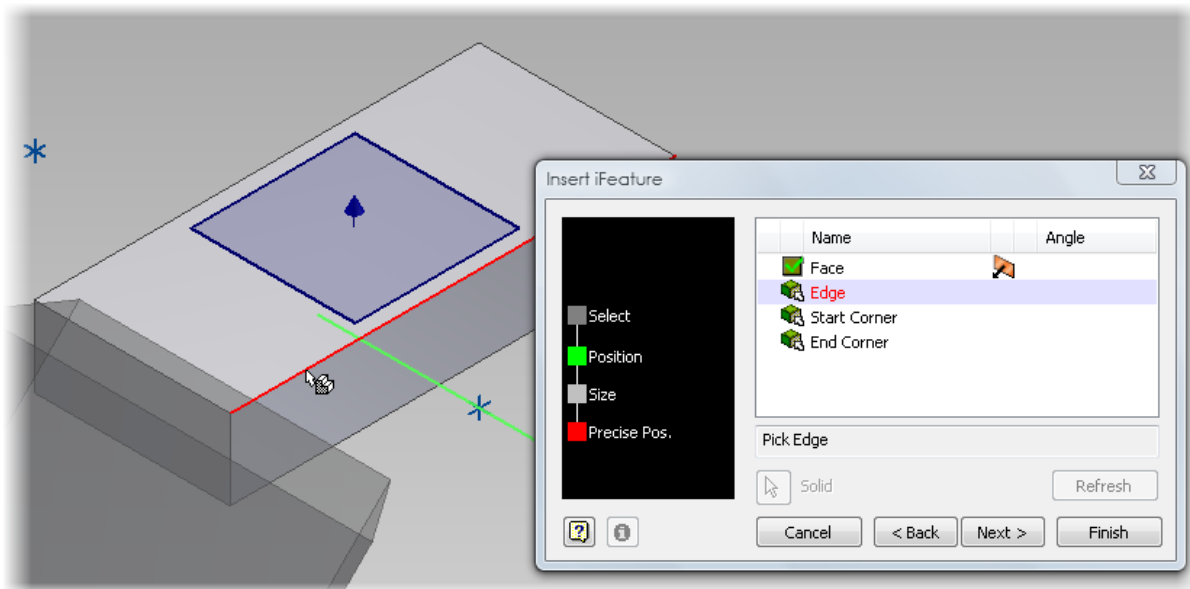


Figure 3 - Pick a Datum edge (Arris)

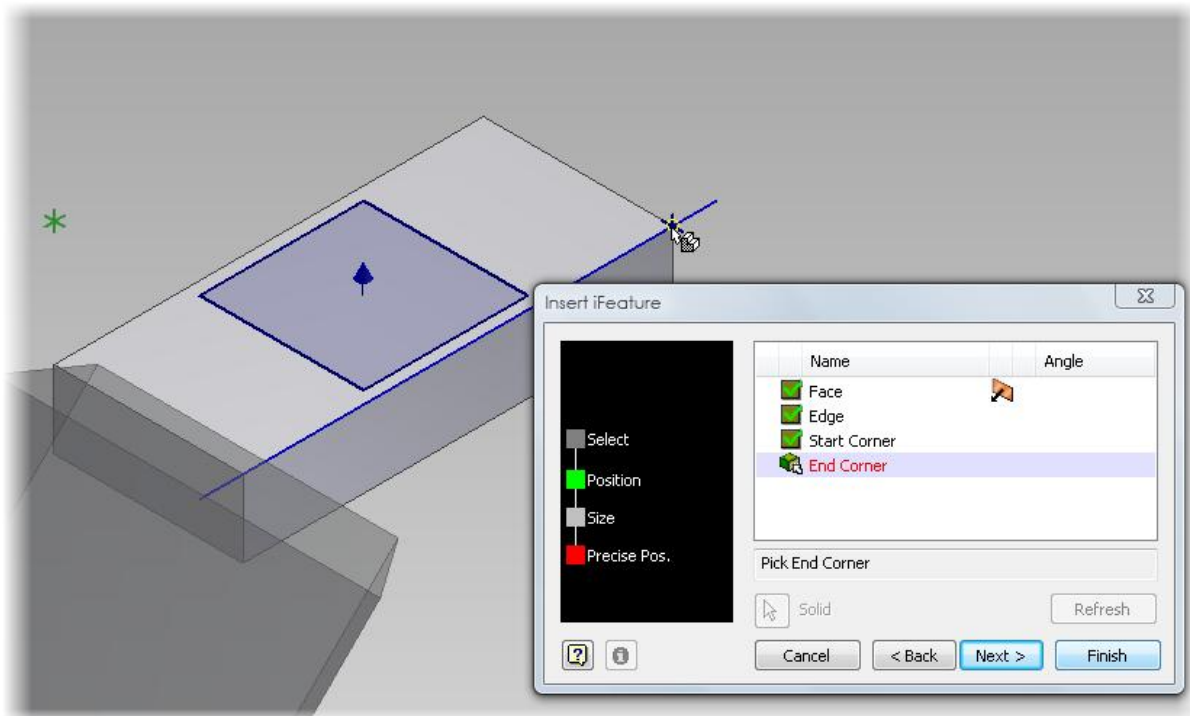


Figure 4 - Pick a corner to start the feature

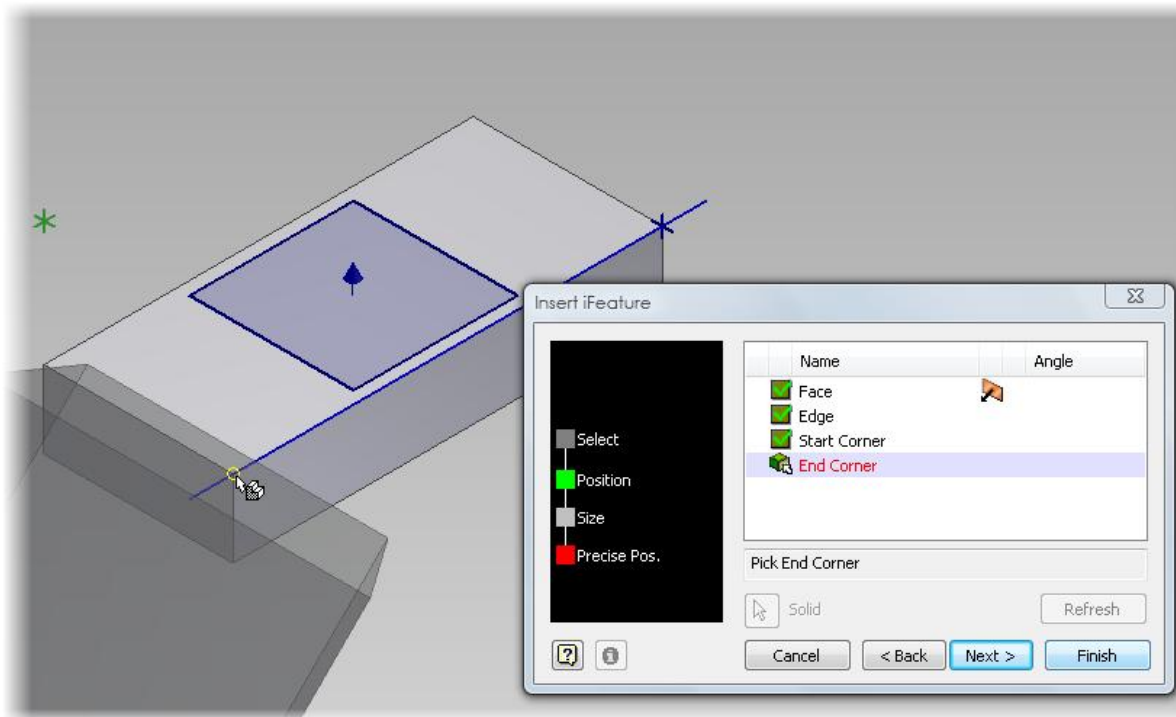


Figure 5 - Pick a corner to end the feature

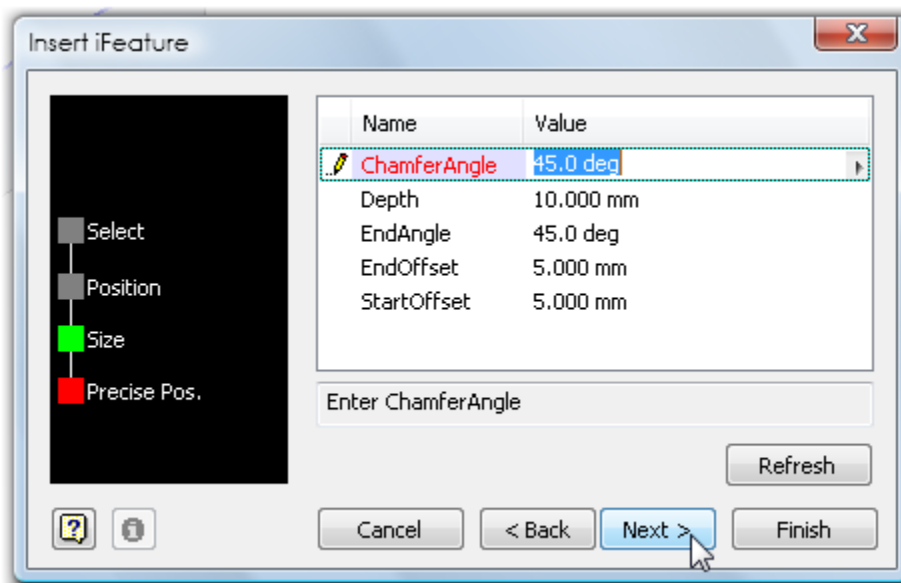


Figure 6 - Revise values or click 'Finish'

At this point you can revise the given values, or click 'Finish' to place the feature directly.

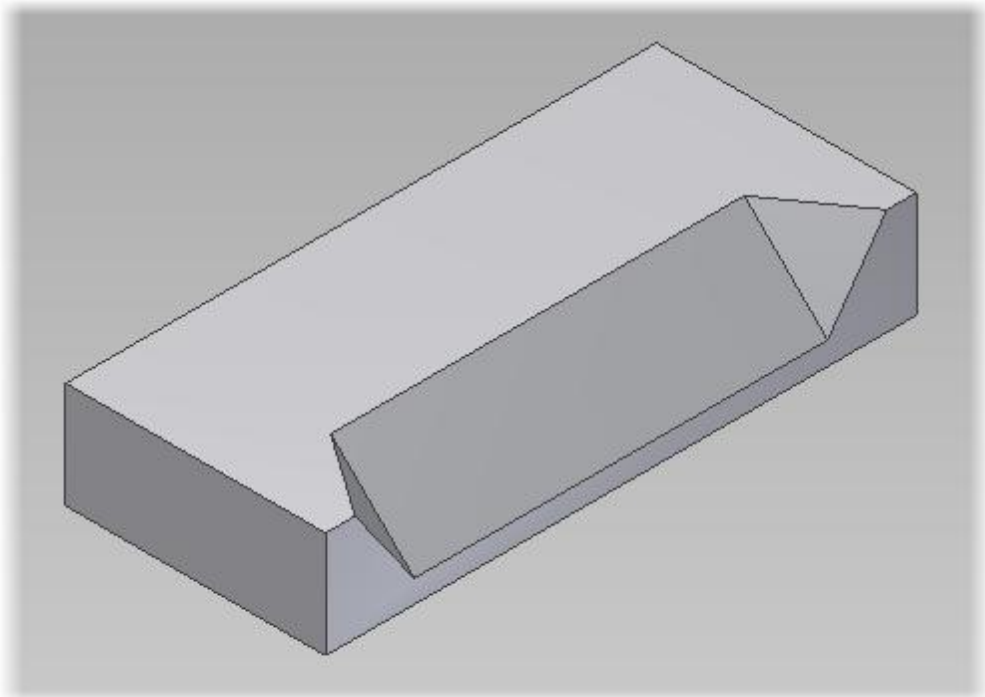


Figure 7 - The Stopped Chamfer

The finished feature should look like this.

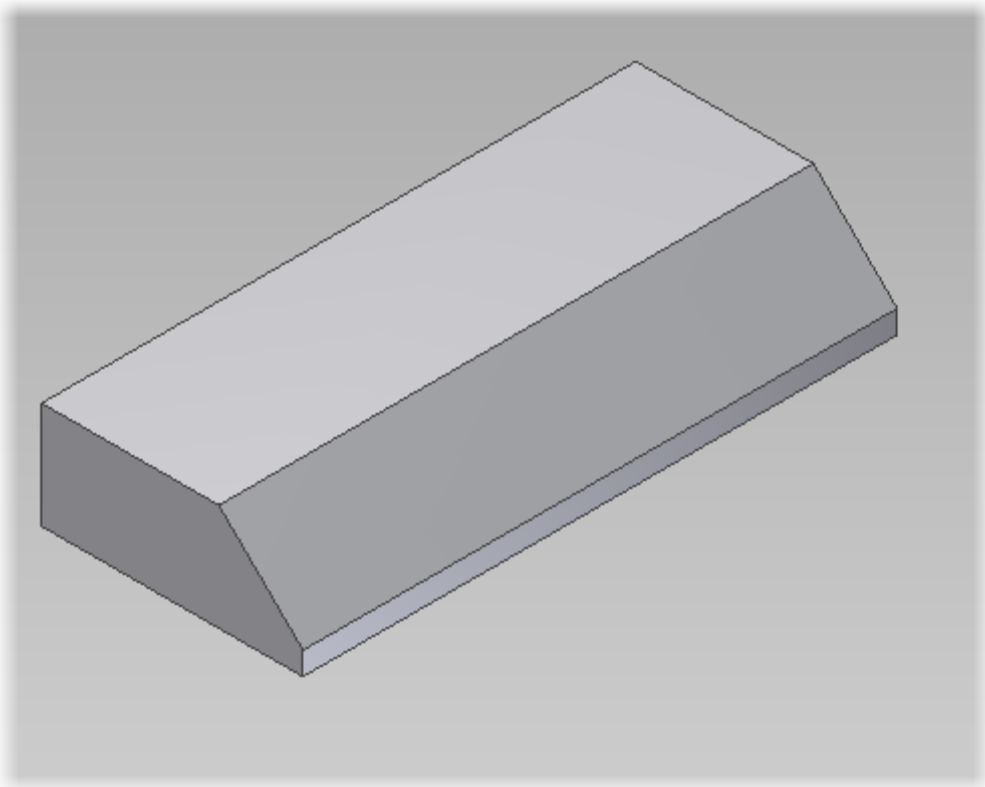


Figure 8 - Not like this!

If the finished feature looks like this, try again – and this time pick the start and finish points in the opposite order.

Inputs

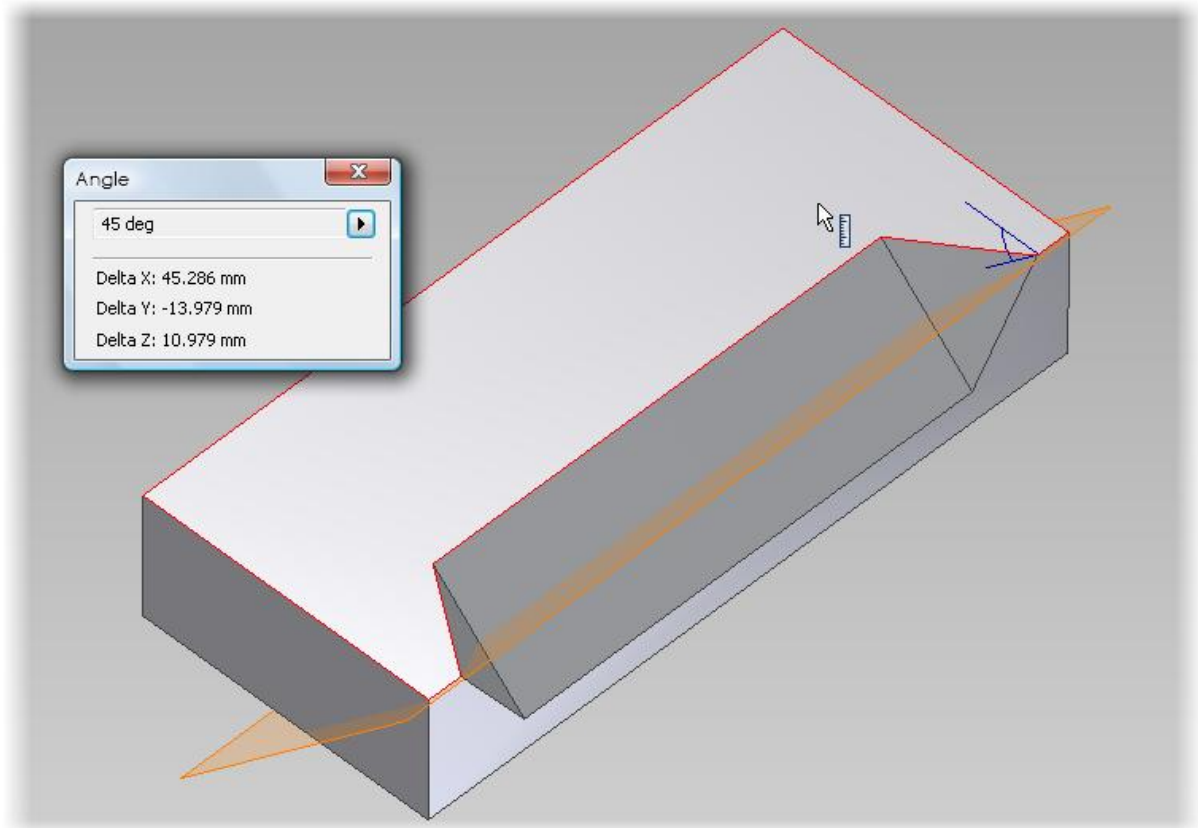


Figure 9 - Chamfer angle

The chamfer angle parameter sets the angle between the chamfer and the Datum face.

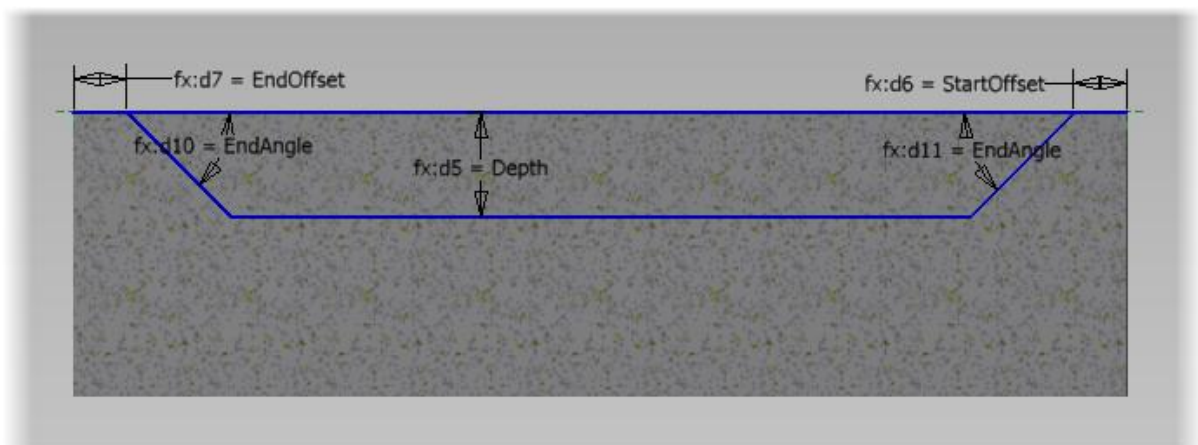


Figure 10 - Other inputs

The 'Depth' parameter is the depth of the Chamfer, from the chamfered face to the Datum Edge. The 'EndAngle' parameter controls the angle at both ends of the stopped chamfer. The 'StartOffset' and 'EndOffset' Parameters set the distance from the corner of the stock to the beginning of the stopped chamfer.

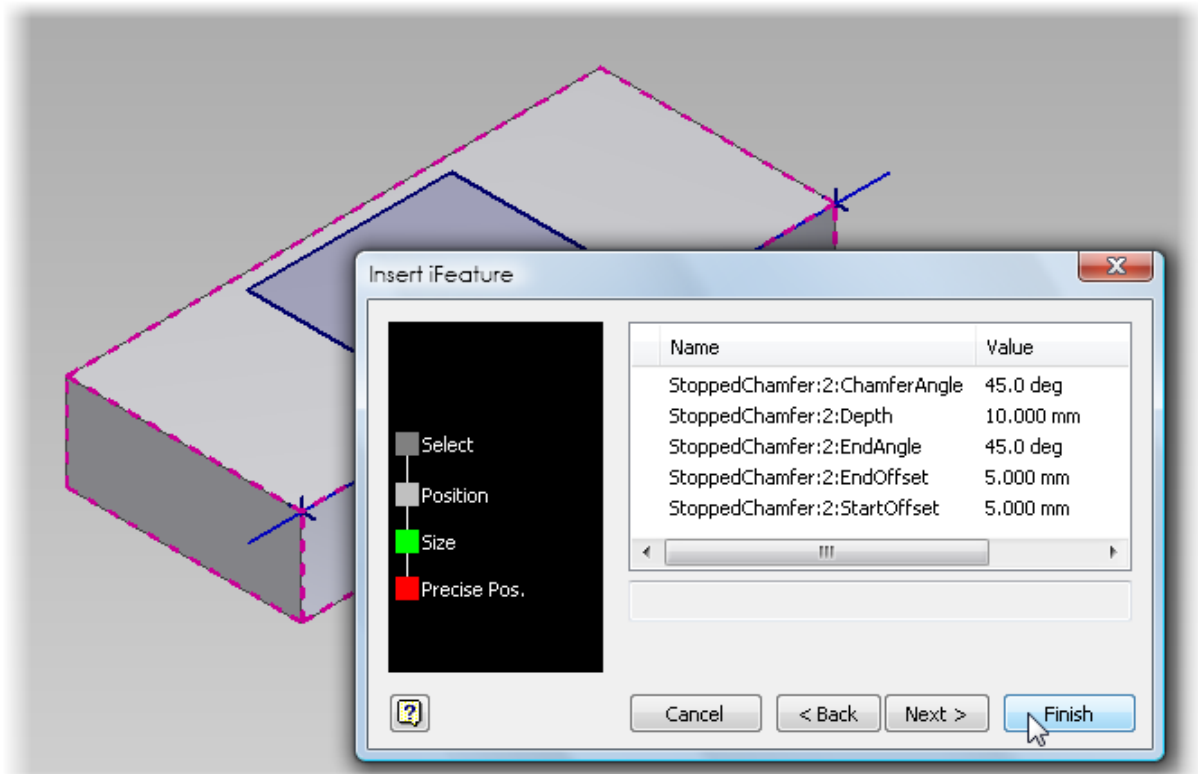


Figure 11 - Edit the iFeature

You can edit the iFeature at any time by double clicking on its node in the part feature browser.

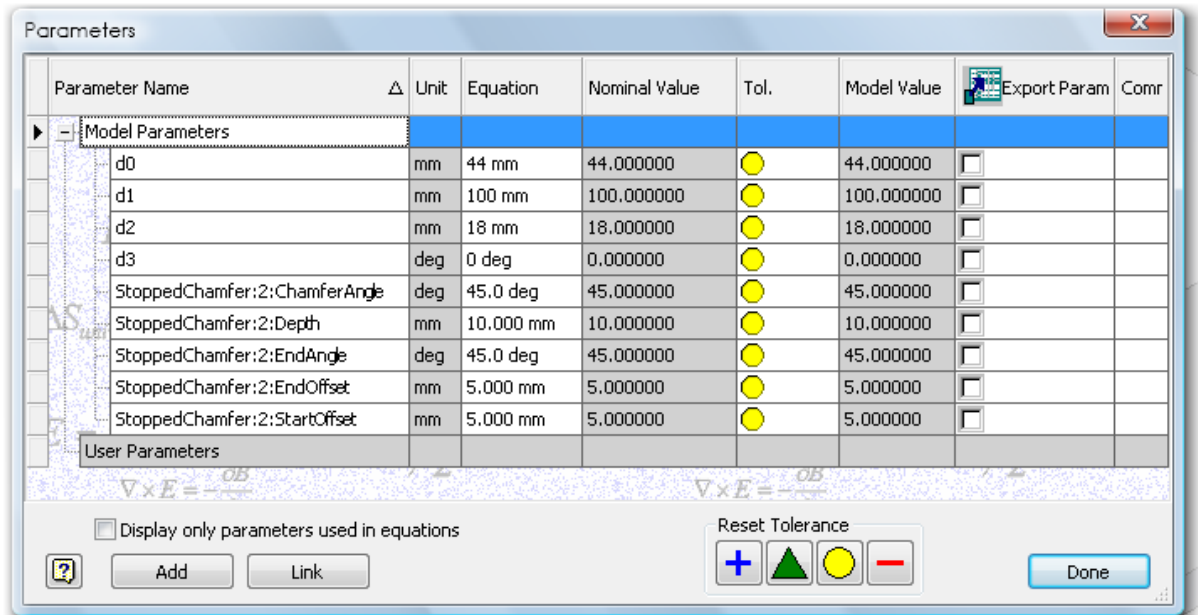


Figure 12 - iFeature parameters

Or you can edit the values directly in the Parameters manager.

Variations

Examples of the kind of stopped Chamfers you can create with this iFeature.

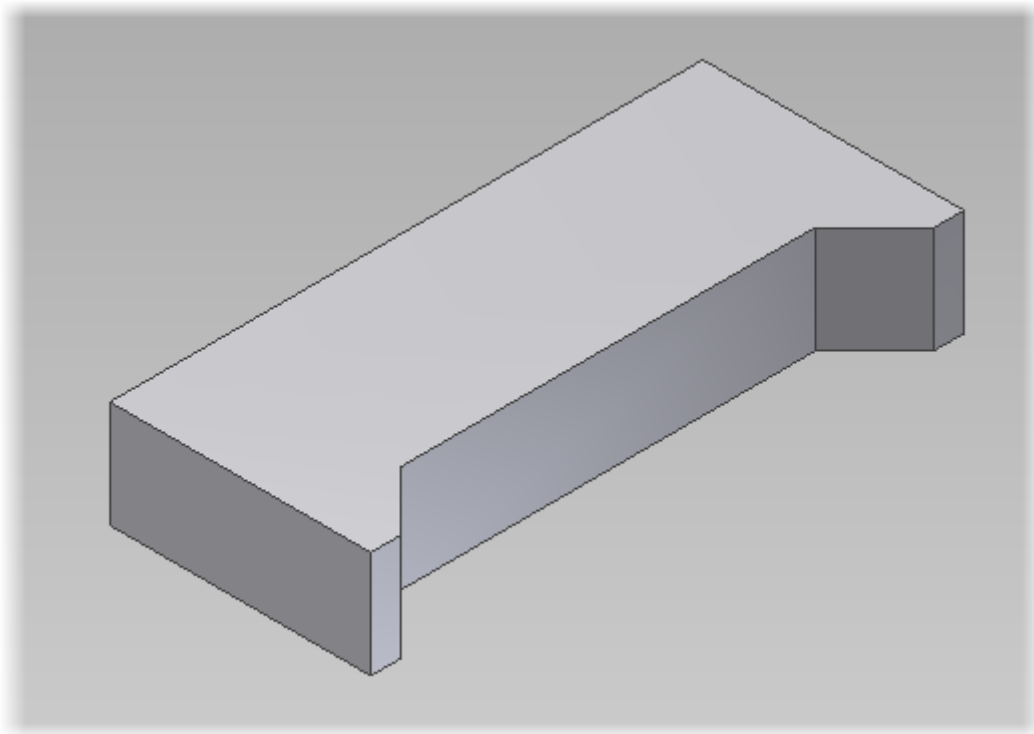


Figure 13 - 'ChamferAngle' = 0 degrees

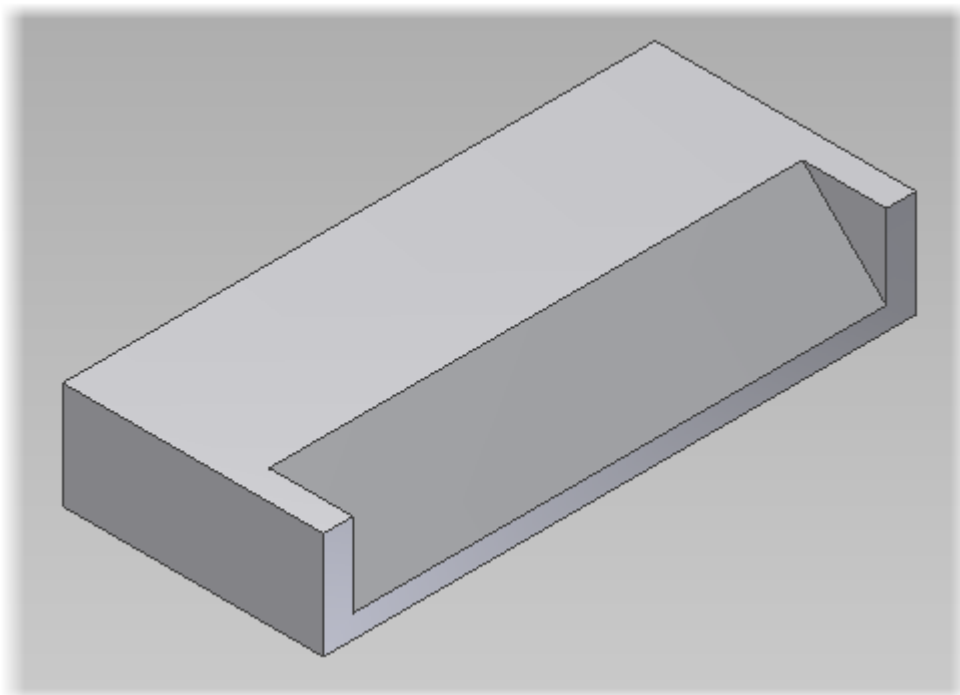


Figure 14 - 'EndAngle' = 90 Degrees

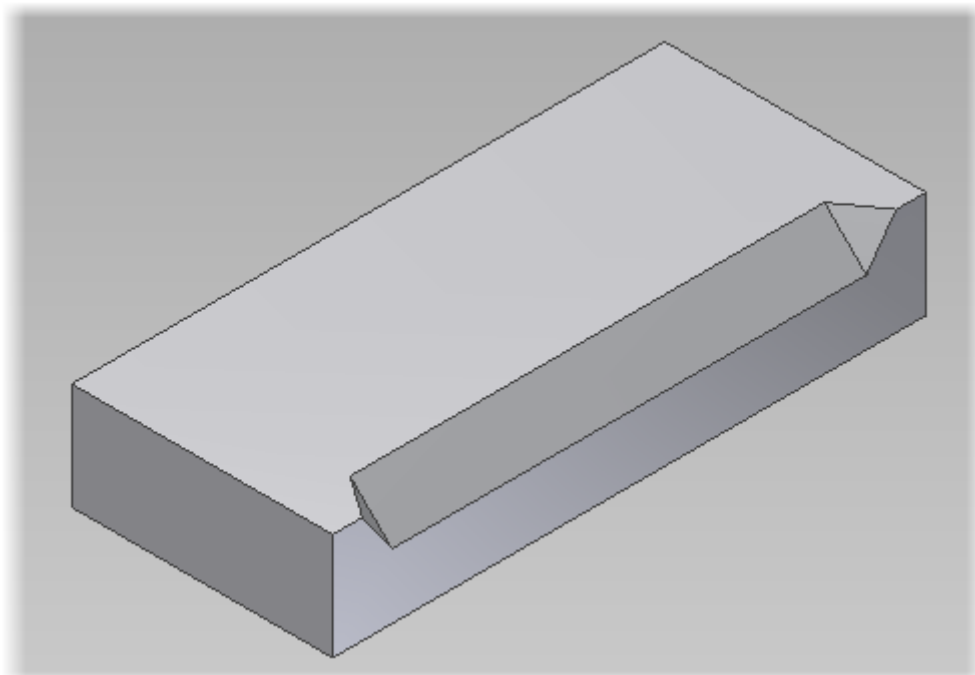


Figure 15 - 'Depth' = 5mm

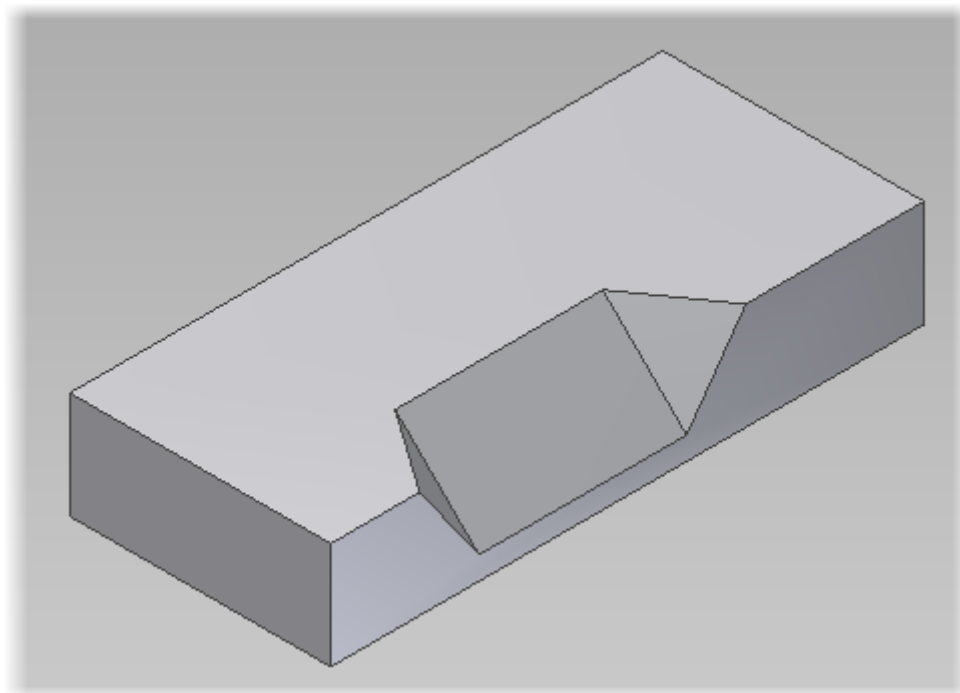


Figure 16 - 'StartOffset' = 15mm, 'EndOffset' = 30mm